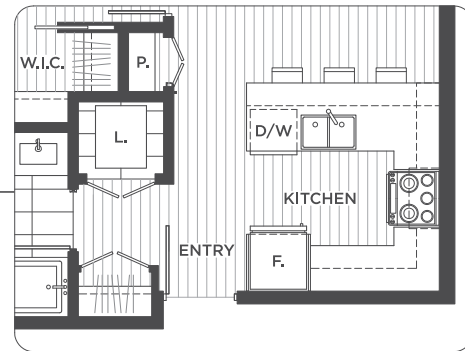
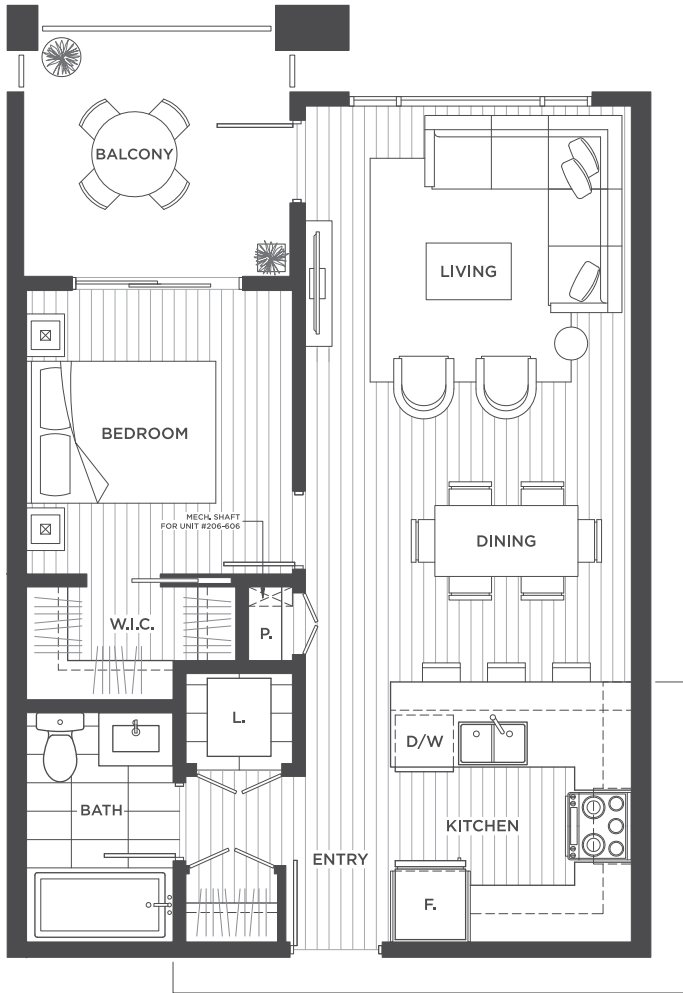




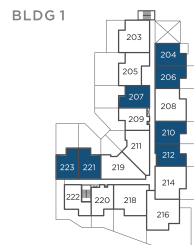
THE RESIDENCES AT FREMONT VILLAGE

PLAN A2 | 1 BEDROOM | 580-605 SQ FT

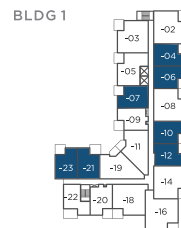
BLDG 1 | UNITS 204-604, 206-606, 207-607, 210-610, 212-612, 221-621, 223-623



VARIANCE PLAN - BLDG 1
#212-612



2ND FLOOR



3RD - 6TH FLOOR



The floorplans, square footage, dimensions, design and configuration of the strata lots and project are approximate and/or artist's interpretation only and may differ from what is shown. Final dimensions, square footage, and configuration shall be determined by the final strata plans. Final floorplans may be the mirror image of the floorplans shown above. Refer to architectural drawings. The developer reserves the right to make changes without notice to the floorplans, ceiling heights, project design, landscaping plans, appliances, specifications, and features. E.&O.E.



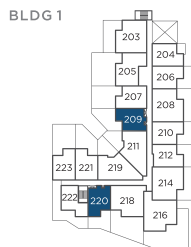


THE RESIDENCES

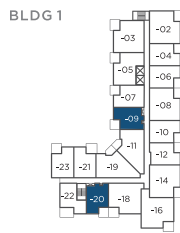
AT FREMONT VILLAGE

PLAN A6 | 1 BEDROOM | 580-605 SQ FT

BLDG 1 | UNITS 209-609, 220-620



2ND FLOOR



3RD - 6TH FLOOR



The floorplans, square footage, dimensions, design and configuration of the strata lots and project are approximate and/or artist's interpretation only and may differ from what is shown. Final dimensions, square footage, and configuration shall be determined by the final strata plans. Final floorplans may be the mirror image of the floorplans shown above. Refer to architectural drawings. The developer reserves the right to make changes without notice to the floorplans, ceiling heights, project design, landscaping plans, appliances, specifications, and features. E.&O.E.

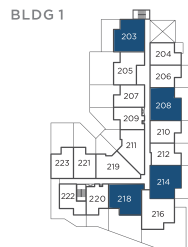
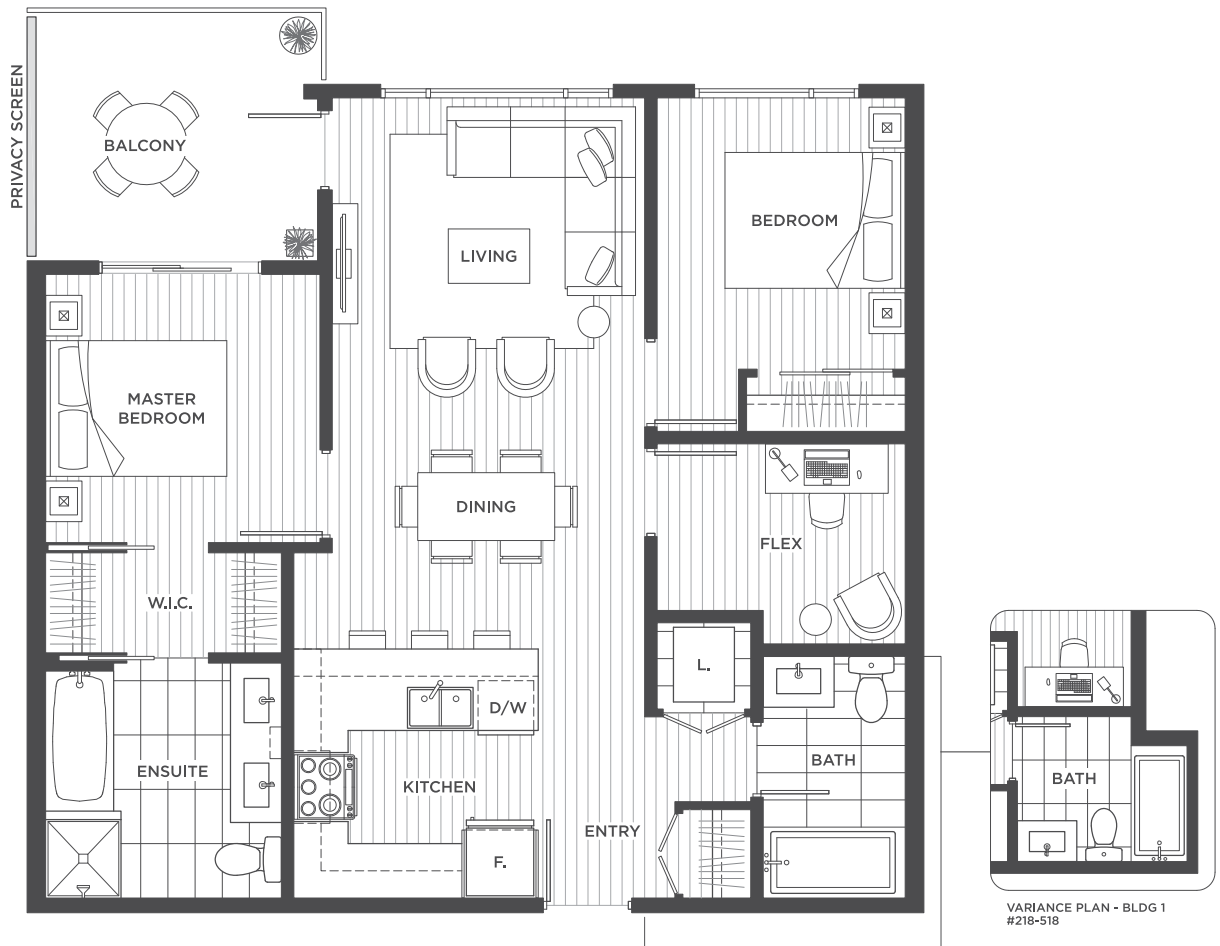




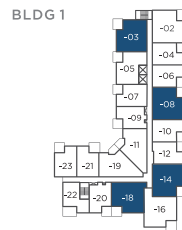
THE RESIDENCES AT FREMONT VILLAGE

PLAN D2 | 2 BEDROOM + FLEX | 960 SQ FT

BLDG 1 | UNITS 302-602, 203-603, 208-608, 214-614, 218-618



2ND FLOOR



3RD - 6TH FLOOR



The floorplans, square footage, dimensions, design and configuration of the strata lots and project are approximate and/or artist's interpretation only and may differ from what is shown. Final dimensions, square footage, and configuration shall be determined by the final strata plans. Final floorplans may be the mirror image of the floorplans shown above. Refer to architectural drawings. The developer reserves the right to make changes without notice to the floorplans, ceiling heights, project design, landscaping plans, appliances, specifications, and features. E.&O.E.



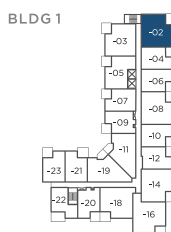


THE RESIDENCES

AT FREMONT VILLAGE

PLAN D12 | 2 BEDROOM + FLEX | 920 - 935 SQ FT

BLDG 1 | UNITS 302-602



3RD - 6TH FLOOR

The floorplans, square footage, dimensions, design and configuration of the strata lots and project are approximate and/or artist's interpretation only and may differ from what is shown. Final dimensions, square footage, and configuration shall be determined by the final strata plans. Final floorplans may be the mirror image of the floorplans shown above. Refer to architectural drawings. The developer reserves the right to make changes without notice to the floorplans, ceiling heights, project design, landscaping plans, appliances, specifications, and features. E.&O.E.



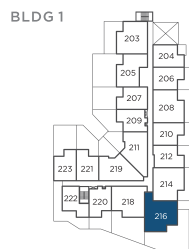
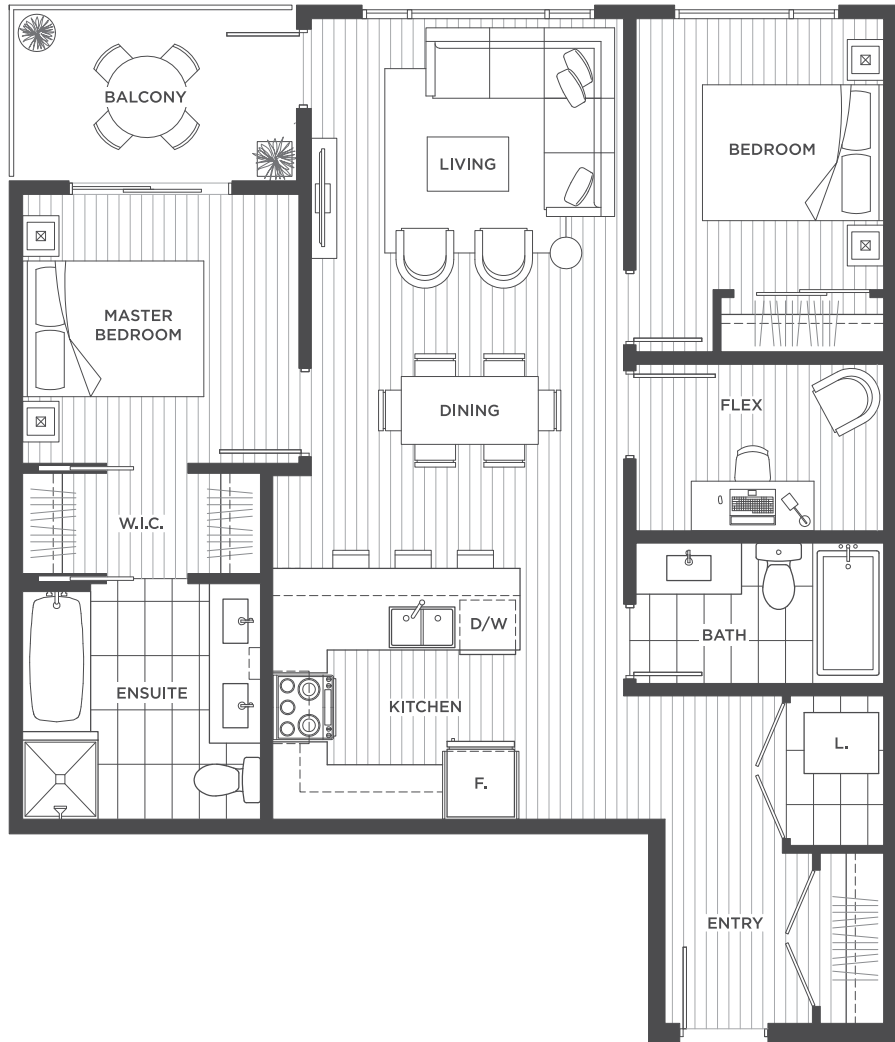


THE RESIDENCES

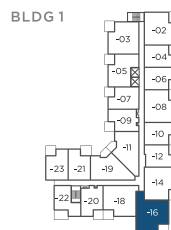
AT FREMONT VILLAGE

PLAN E2 | 2 BEDROOM + FLEX | 985 - 1,000 SQ FT

BLDG 1 | UNITS 216-616



2ND FLOOR



3RD-6TH FLOOR



The floorplans, square footage, dimensions, design and configuration of the strata lots and project are approximate and/or artist's interpretation only and may differ from what is shown. Final dimensions, square footage, and configuration shall be determined by the final strata plans. Final floorplans may be the mirror image of the floorplans shown above. Refer to architectural drawings. The developer reserves the right to make changes without notice to the floorplans, ceiling heights, project design, landscaping plans, appliances, specifications, and features. E.&O.E.

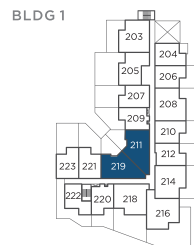
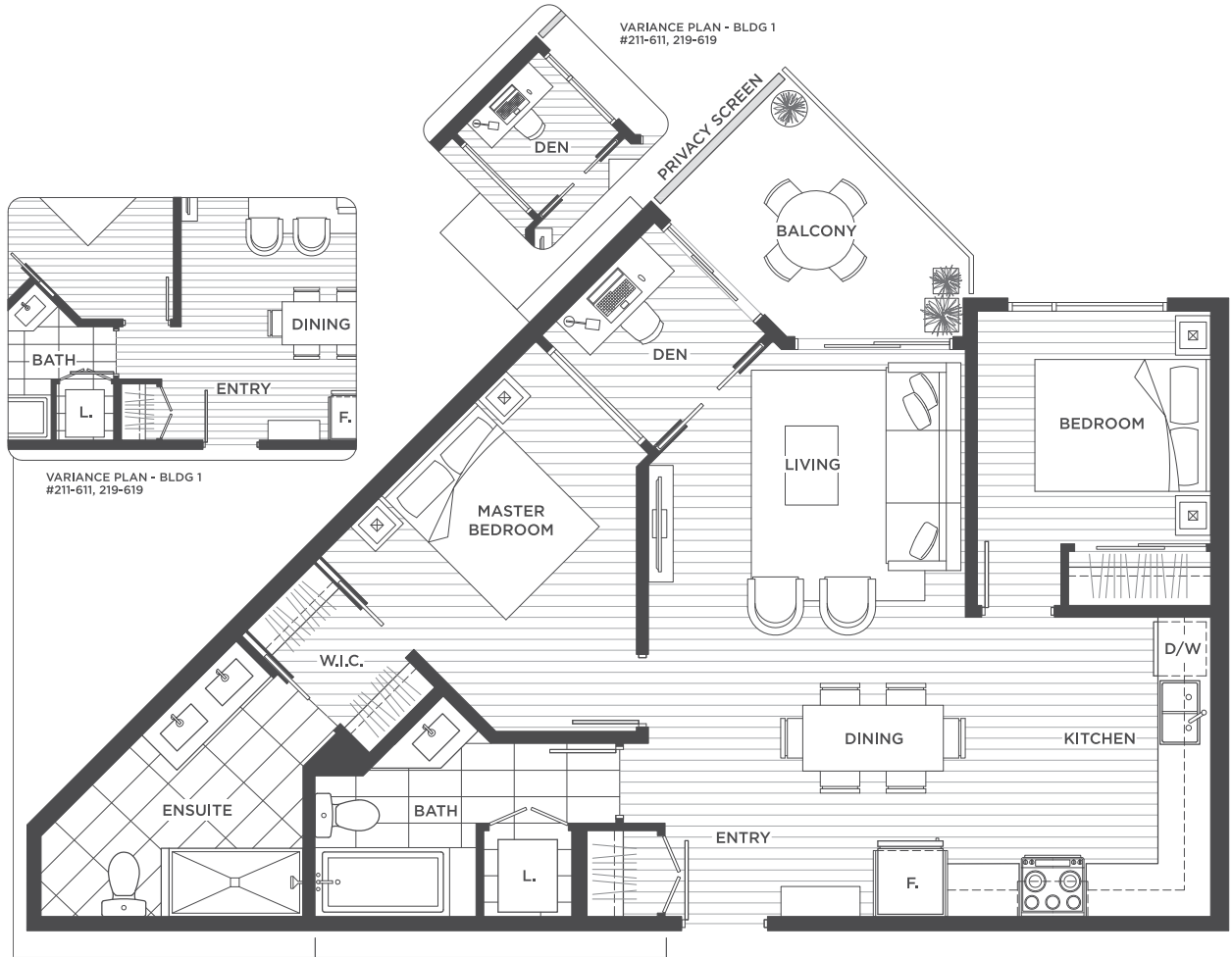




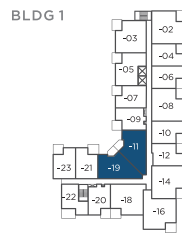
THE RESIDENCES AT FREMONT VILLAGE

PLAN H1 | 2 BEDROOM + DEN | 850 - 880 SQ FT

BLDG 1 | UNITS 211-611, 219-619



2ND FLOOR



3RD - 6TH FLOOR



The floorplans, square footage, dimensions, design and configuration of the strata lots and project are approximate and/or artist's interpretation only and may differ from what is shown. Final dimensions, square footage, and configuration shall be determined by the final strata plans. Final floorplans may be the mirror image of the floorplans shown above. Refer to architectural drawings. The developer reserves the right to make changes without notice to the floorplans, ceiling heights, project design, landscaping plans, appliances, specifications, and features. E.&O.E.



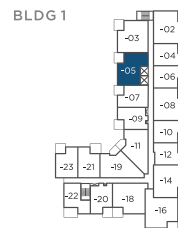
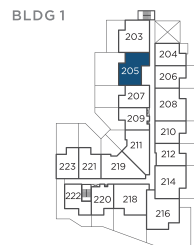


THE RESIDENCES

AT FREMONT VILLAGE

PLAN K1 | 2 BEDROOM | 775 - 790 SQ FT

BLDG 1 | UNITS 205-605



2ND FLOOR

3RD - 6TH FLOOR

The floorplans, square footage, dimensions, design and configuration of the strata lots and project are approximate and/or artist's interpretation only and may differ from what is shown. Final dimensions, square footage, and configuration shall be determined by the final strata plans. Final floorplans may be the mirror image of the floorplans shown above. Refer to architectural drawings. The developer reserves the right to make changes without notice to the floorplans, ceiling heights, project design, landscaping plans, appliances, specifications, and features. E.&O.E.



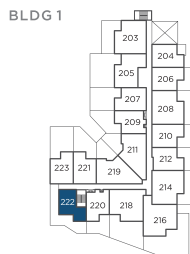


THE RESIDENCES

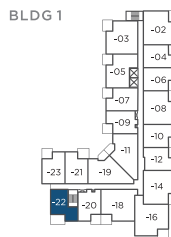
AT FREMONT VILLAGE

PLAN P1 | 1 BEDROOM | 565 - 575 SQ FT

BLDG 1 | UNITS 222-622



2ND FLOOR



3RD-6TH FLOOR



The floorplans, square footage, dimensions, design and configuration of the strata lots and project are approximate and/or artist's interpretation only and may differ from what is shown. Final dimensions, square footage, and configuration shall be determined by the final strata plans. Final floorplans may be the mirror image of the floorplans shown above. Refer to architectural drawings. The developer reserves the right to make changes without notice to the floorplans, ceiling heights, project design, landscaping plans, appliances, specifications, and features. E.&O.E.

